



www.cyclers.city

Air-quality Aware Bicycle Routing with

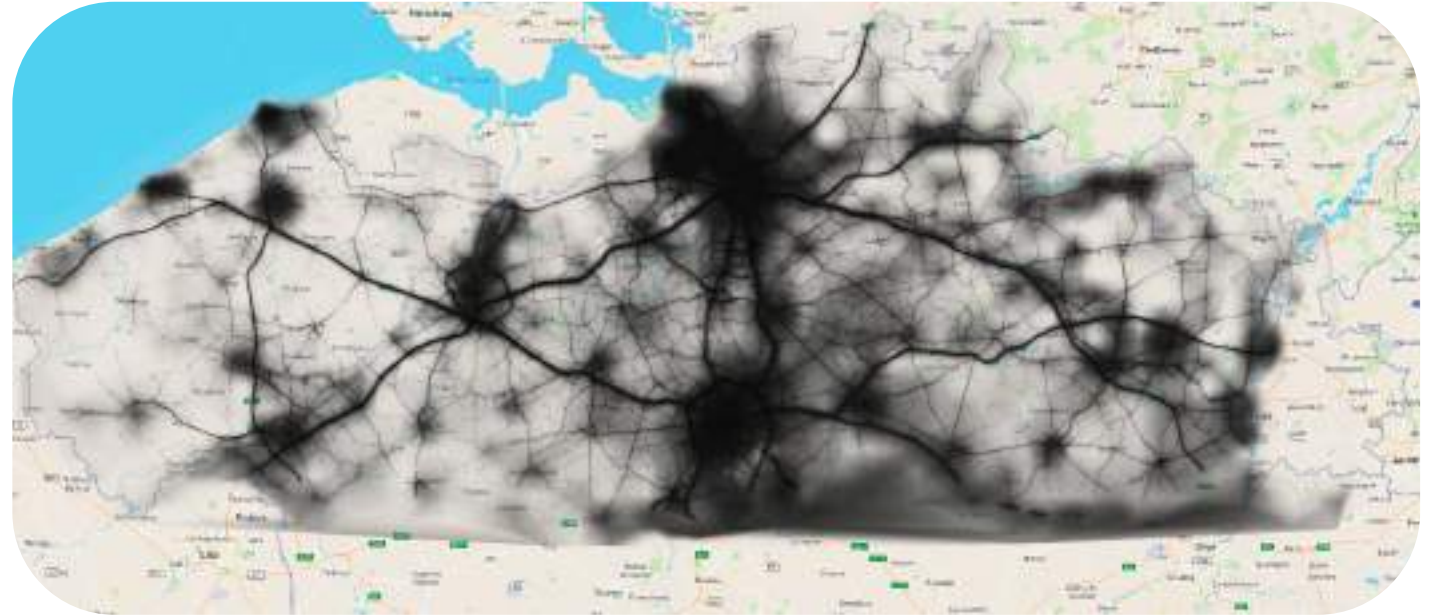
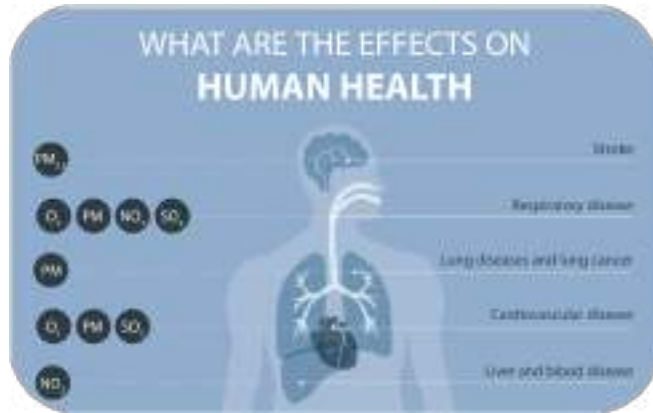


CYCLERS

Pavol Žilecký
STAND G5



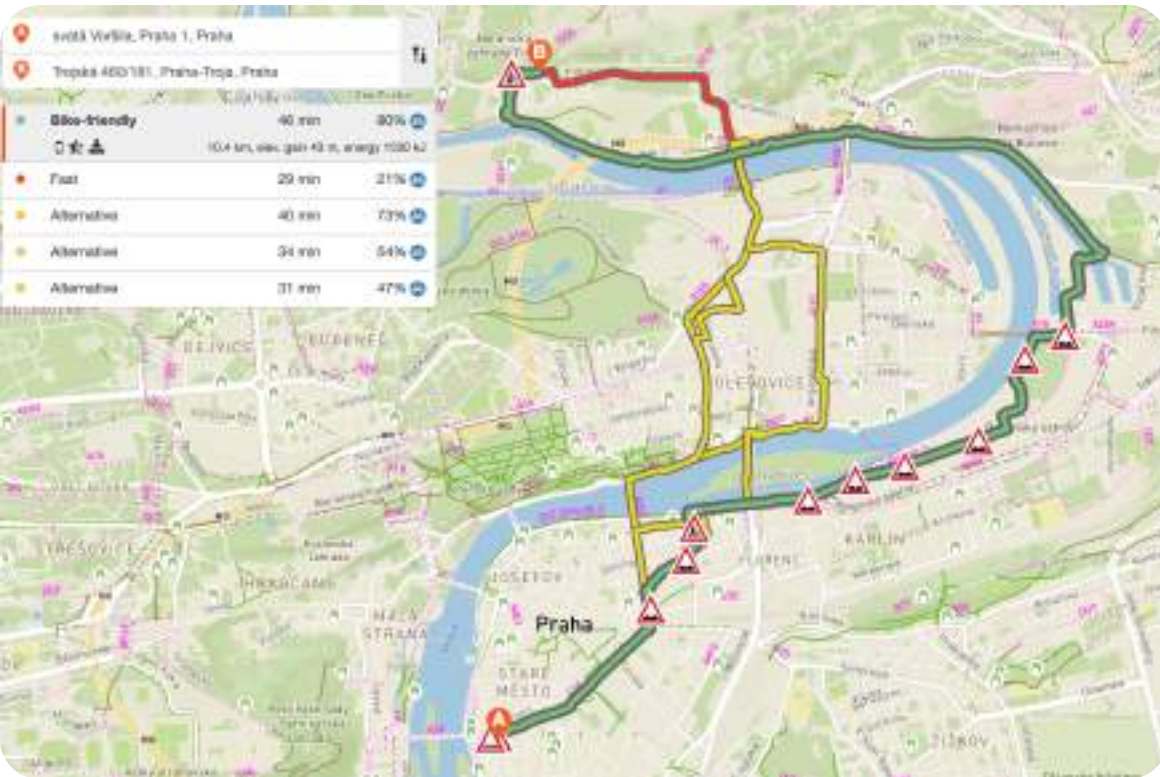
Cyclists are exposed to air-pollution



High resolution **air-pollution** data: Flanders



Multi-criteria Bicycle Routing Engine



Developed specially for cyclists



Flexible and extendible cycling first optimization criteria

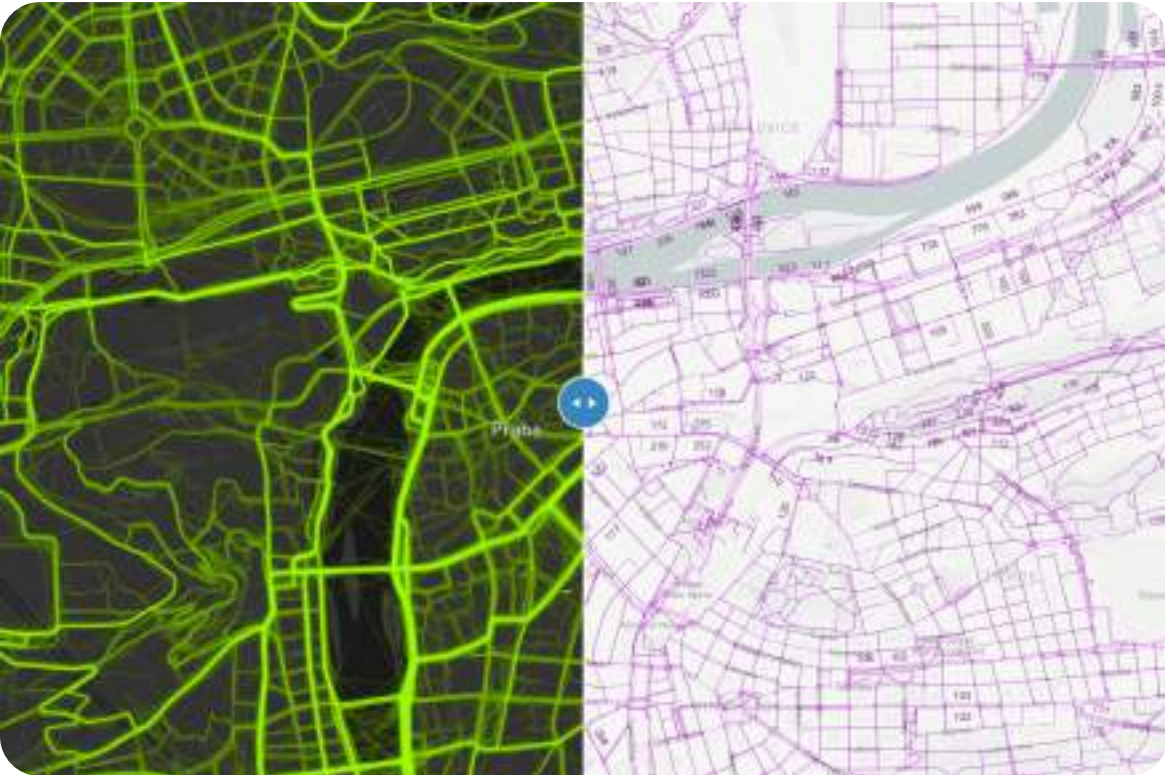


Alternative set of routes



Penalize turns

Multi-criteria Bicycle Routing Engine



Continuously learning from GPS tracks







Learns where cyclists really riding



Correct map data

Multi-criteria Bicycle Routing Engine



-  **Personalized**
-  **Time-Dependent**
-  **Multi-Purpose Routes**
-  **Community-enriched**



Cleanest Air Routes

Air-quality-aware bicycle routing



Input Data

Map Data

Elevation Data

GPS Tracks Data

Traffic Intensity Data

Integration

Route Network Model



Routing

Multi-criteria Bicycle Routing Engine

Travel Time

Popularity

Cycling Comfort

Safety

API

Webs & Mobile Apps





Cleanest Air Routes

Air-quality-aware bicycle routing



Input Data

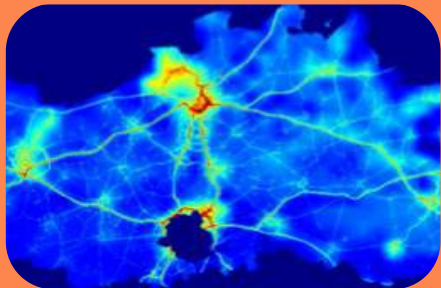
Map Data

Elevation Data

GPS Tracks Data

Traffic Intensity Data

Air-quality Data



Integration

Route Network Model



Routing

Multi-criteria Bicycle Routing Engine

Travel Time

Popularity

Cycling Comfort

Safety

Pollution Exposure /
Air-quality

API

Webs & Mobile Apps



**CLEANEST
AIR
ROUTES!**



Belgium Cleanest Air Routes



Bicycle Routing App with Web Frontend



Advance Bicycle Routing Engine



Cleanest Air Bicycle Routes – avoiding highly polluted routes



Detailed Cycling Maps



Belgium Coverage



Launch: September



www.cyclers.city

Air-quality Aware Bicycle Routing with



CYCLERS

Pavol Žilecký
STAND G5